

MIT Campus Access Update

Krystyn J. Van Vliet
krystyn@mit.edu

with planning input from
Campus Space Contingency Working Group* comprising
Office of the Provost, MIT Physical Security's IS&T and MIT Police,
Campus Services & Stewardship, Campus Planning, Department of Facilities,
and
MIT UA, GSC, Assistant Deans Staff Group,
Faculty Policy Committee, CMT, and other MIT Community Members

*Greg Raposa, Marco Gomes, Joe Higgins, Mark Silis, John DiFava, Keith Diggans, Monica Lee, Laurie Verner

MIT building access: guiding principles

As we consider changes to our campus access protocols, we are guided by these principles:

- Provide **ease of access** for MIT students, staff, and faculty as we live, work, and learn in our urban Cambridge campus.
- Support the **health, safety, and security** of our community.
- Support a **welcoming environment** for our invited visitors participating in academics, research, operations, and special MIT events.
- Provide **clarity regarding access for visitors** from the wider Cambridge/Boston community (our neighbors), and the global general public.
- **Retain elements of modified access** that worked well for the MIT community during the pandemic.



MIT conversations informed campus access plan

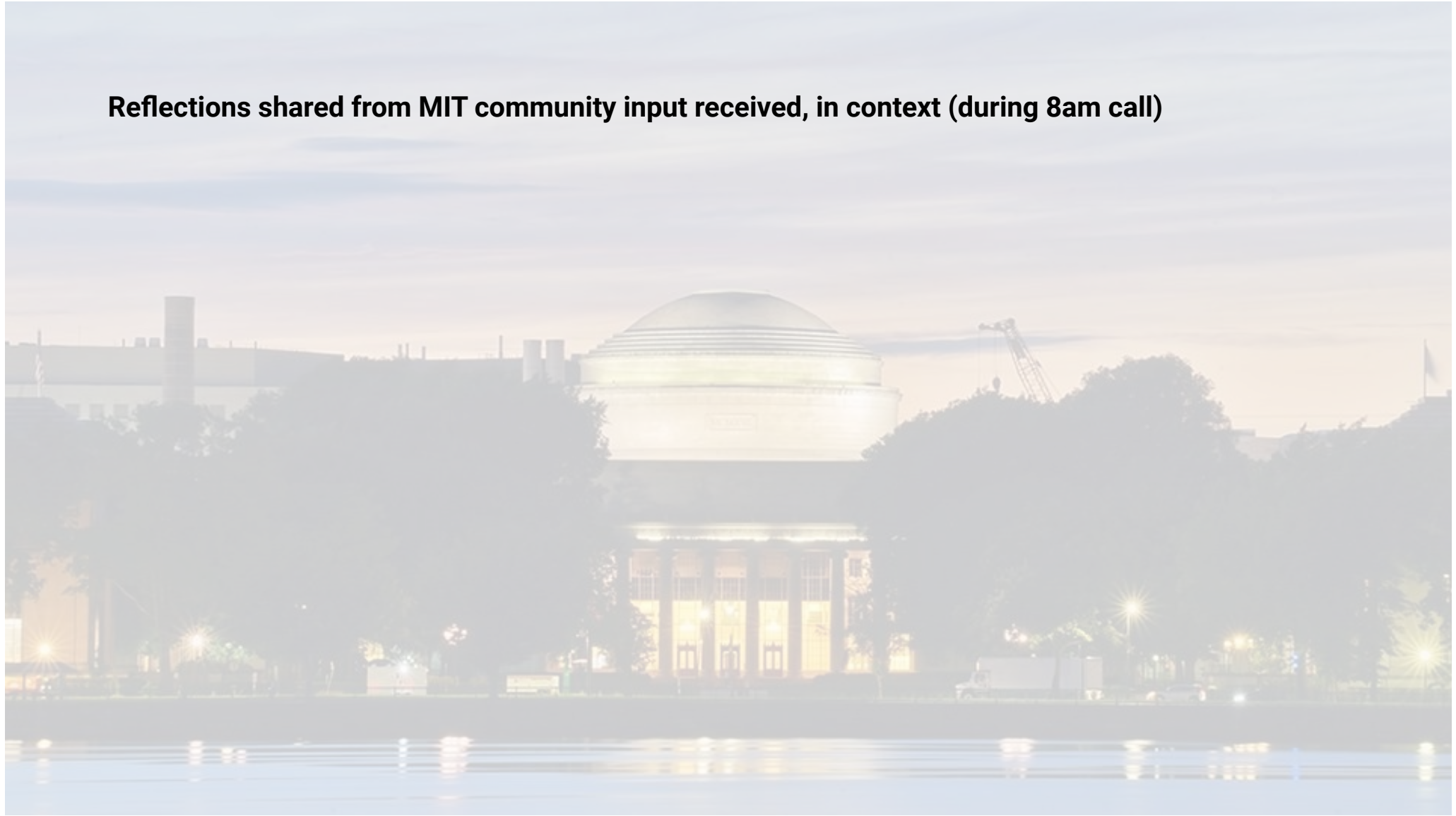
Planning team:

- **Office of the Provost** (campus access and space planning oversight)
- **MIT Police** (safety/security considerations)
- **IS&T** (technical / systems considerations and implementation)
- **Campus Services & Stewardship** (oversight for campus planning/design and management of physical plant)
- **Campus Planning** (design/planning considerations)
- **Facilities** (physical operations and implementation; impacts on staff working 24/7 on campus)

Sought input and reflections from individuals in various roles and offices, including:

- Undergraduate Association leaders
- Graduate Student Council leaders
- Faculty Policy Committee (includes faculty, staff, and students)

Reflections shared from MIT community input received, in context (during 8am call)



Campus access: today

Faculty, students, staff, affiliates:

MIT ID (Covid Pass) required at all exterior doors (access points)

- **Black dots** = any MIT ID
- **Blue dots** = Subset of MIT IDs

Visitors:

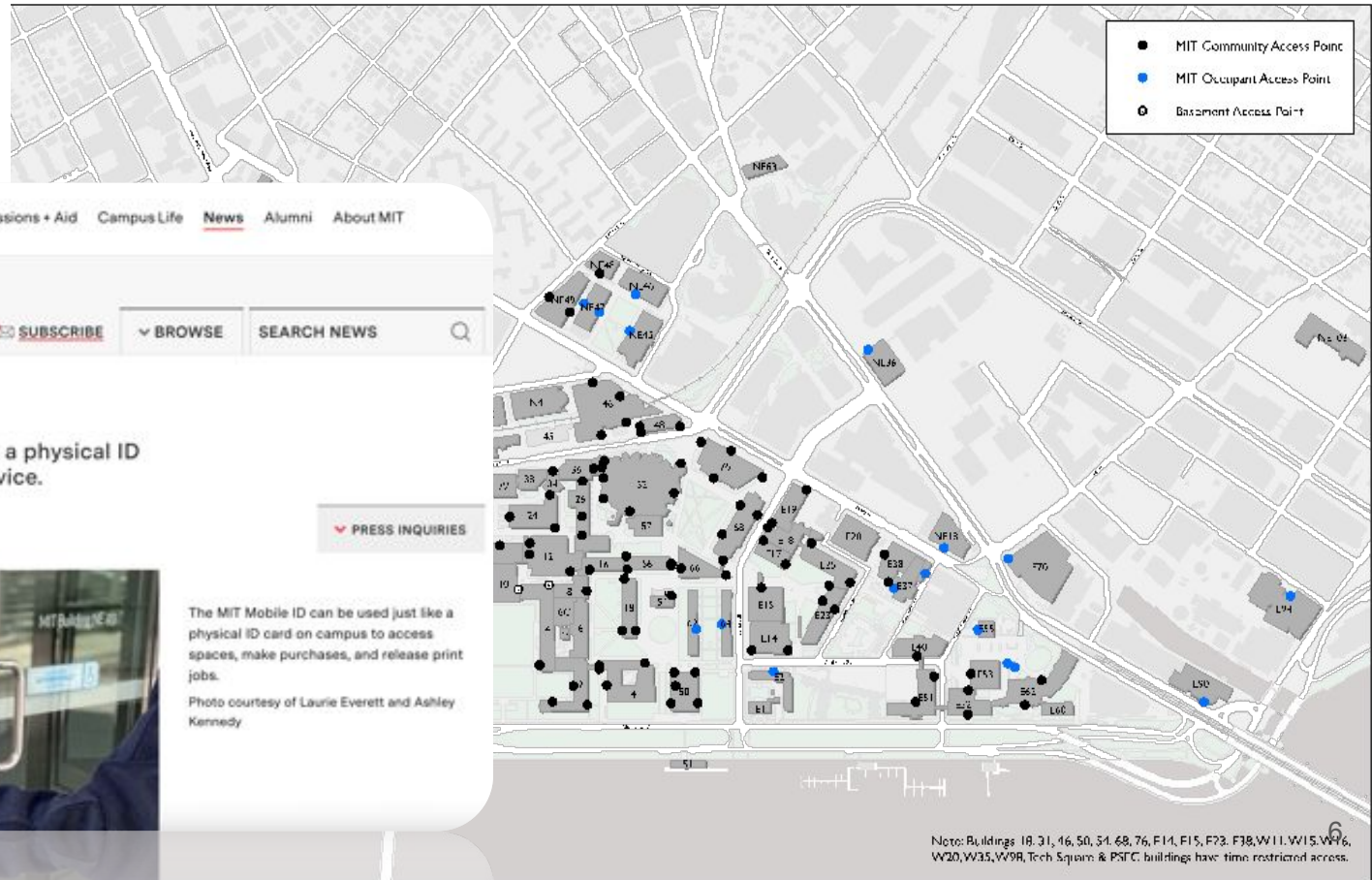
Escorted by Covid Pass holder
or tap in using MIT-issued Tim Ticket



Campus access: today, including digital IDs

Students, staff, faculty, affiliates:
MIT ID required at all exterior doors
(access points)

- **Black dots** = any current MIT ID
- **Blue dots** = Subset of MIT IDs



MIT News
ON CAMPUS AND AROUND THE WORLD

Education Research Innovation Admissions + Aid Campus Life News Alumni About MIT

SUBSCRIBE BROWSE SEARCH NEWS

MIT ID cards go digital

The MIT Mobile ID offers the same functionality a physical ID card does on campus, via an iOS or Android device.

Information Systems and Technology
December 1, 2021

PRESS INQUIRIES

The MIT Mobile ID can be used just like a physical ID card on campus to access spaces, make purchases, and release print jobs.
Photo courtesy of Laurie Everett and Ashley Kennedy

Campus access: today

Students, staff, faculty, affiliates:

MIT ID required at all exterior doors (access points)

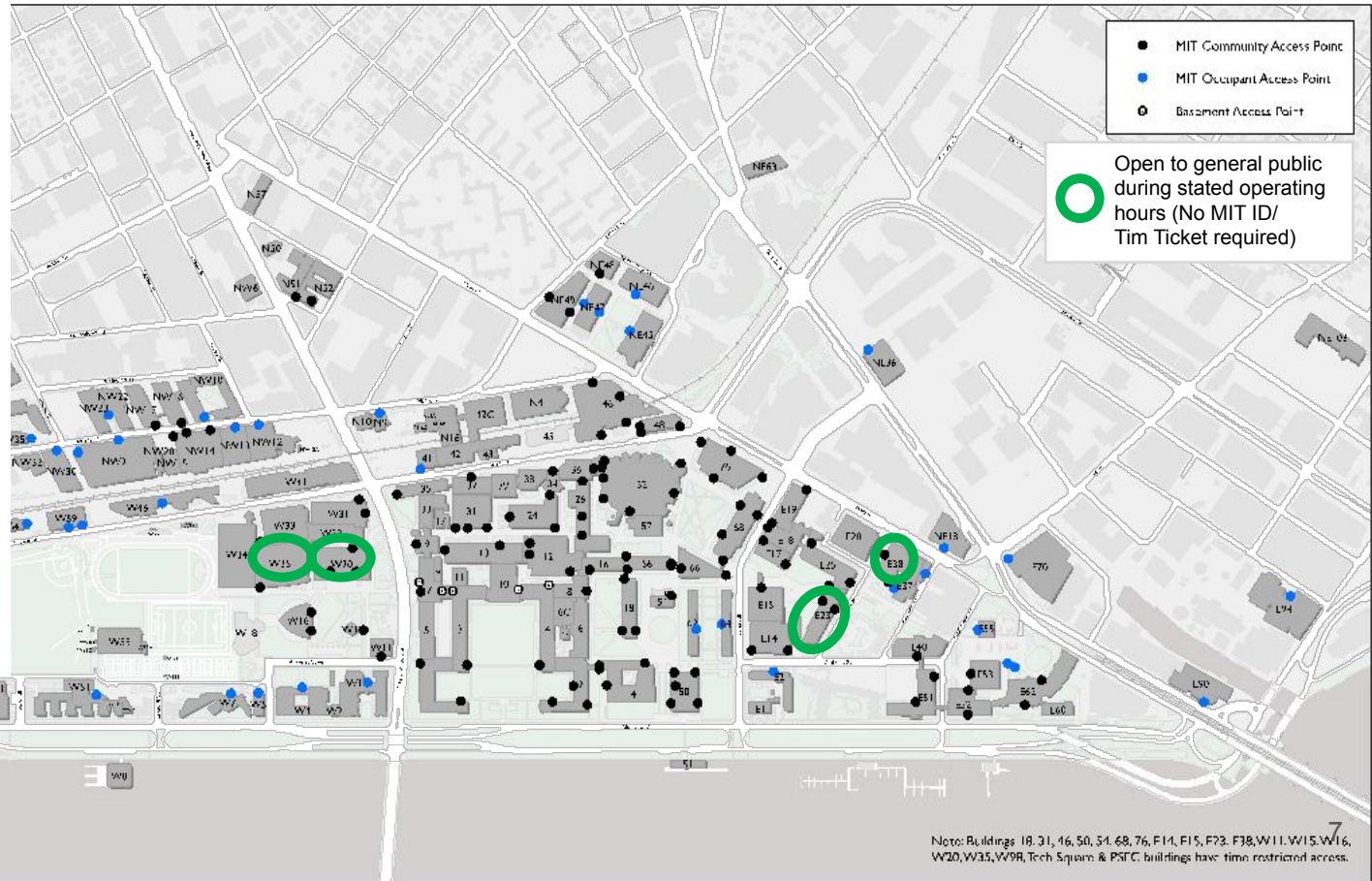
- **Black dots** = any current MIT ID
- **Blue dots** = Subset of MIT IDs

Visitors:

Escorted by MIT ID holder or tap in using MIT-issued Tim Ticket

A few buildings open to the **general public** (no ID or Tim Ticket needed) during specific daytime hours:

- E23 MIT Medical
- E38 Welcome Center
- W20 Stratton Student Center
- W35 Z-Center Athletic Facility



MIT building access moving forward

MIT community

- Members of the MIT community who work and/or live at MIT (**students, faculty, staff, and affiliates**) continue to access campus buildings through access points with their MIT IDs (physical card or digital).
- Those MIT employees and students with such MIT IDs are compliant with current vaccination requirements, and aware of other guidance at <https://covidapps.mit.edu/>.
- **Students who are cross-registered** will be able to self-enroll once they are seen as a current student eligible to register.
- **Affiliates** who are not current students or current employees must be added to by a department access approver to Covid Pass.

Campus map:

<https://covidapps.mit.edu/sites/default/files/documents/MITCampusAccessMap.pdf>



Visitor access: Welcome (no change)

Invited visitors and event attendees, unescorted – use Tim Tickets*

- Any community member with an active Kerberos account can use **Tim Tickets, MIT's visitor pass system**, to register visitors and event attendees: <https://covidapps.mit.edu/visitors>
- Invited visitors **attest** to being up to date with their vaccinations.
- Authorized visitors are given a “Tim Ticket” with a QR code providing access to specific buildings/events; they scan the code at doors equipped with QR Readers ([access point map](#))

Escorted visitors (i.e., delivery person, one-day visitor)

- Visitors may be escorted by a community member who has a valid MIT ID

Distinct process for long-term participants in campus activities (e.g., enrolled visiting students, visiting scholar/scientist appointees, contractors, affiliates)



*Updated info guides and training sessions will be available for interested event planners.
• Authorized access approvers use Covid Pass to request a Kerberos account and MIT ID

Campus access: today and moving forward

Faculty, students, staff, affiliates:

MIT ID (Covid Pass) required at all exterior doors (access points)

- **Black dots** = any MIT ID
- **Blue dots** = Subset of MIT IDs

Visitors:

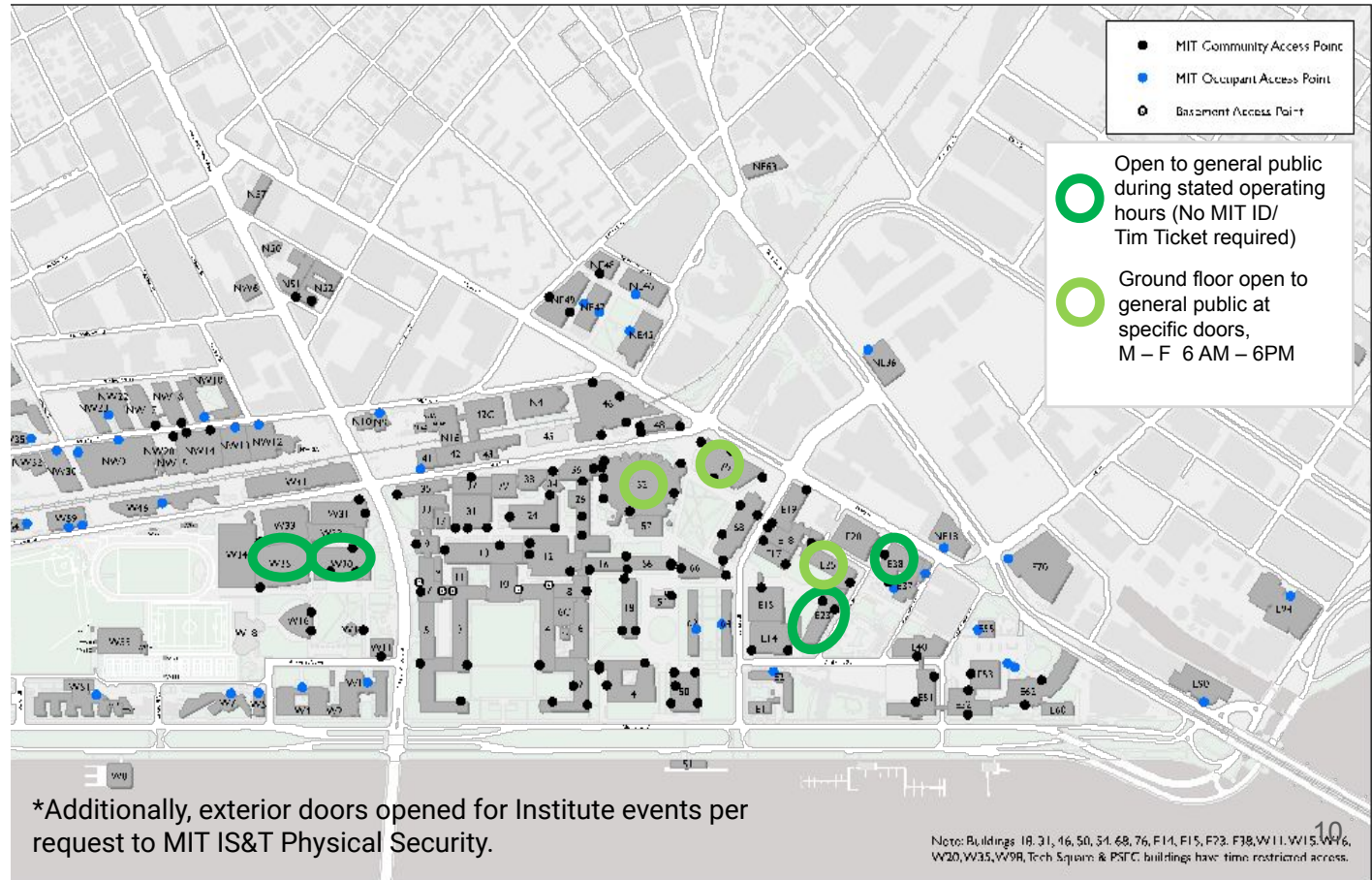
Escorted by Covid Pass holder or tap in using MIT-issued Tim Ticket

A few buildings open to the **general public** (no ID or Tim Ticket needed) during specific daytime hours:

- E23 MIT Medical
- E38 Welcome Center
- W20 Stratton Student Center
- W35 Z-Center Athletic Facility

Adding (on August 22, 2022) M-F 6am-6pm, except MIT holidays and special closings

- E25 Atrium
- 32/Ray and Maria Stata Center (first floor)
- 76/Koch Institute (first floor)



Campus access: today and moving forward

Faculty, students, staff, affiliates:

MIT ID (Covid Pass) required at all exterior doors (access points)

- **Black dots** = any MIT ID
- **Blue dots** = Subset of MIT IDs

Visitors:

Escorted by Covid Pass holder or tap in using MIT-issued Tim Ticket

A few buildings open to the **general public** (no ID or Tim Ticket needed) during specific daytime hours:

- E23 MIT Medical
- E38 Welcome Center
- W20 Stratton Student Center
- W35 Z-Center Athletic Facility

Adding (on August 22, 2022) M-F 6am-6pm, except MIT holidays and special closings

- E25 Atrium
- 32/Ray and Maria Stata Center (first floor)
- 76/Koch Institute (first floor)

Same info as on prior slide and map, but with added specificity on operating hours

Current buildings with exterior doors open to general public during posted schedules (no change):

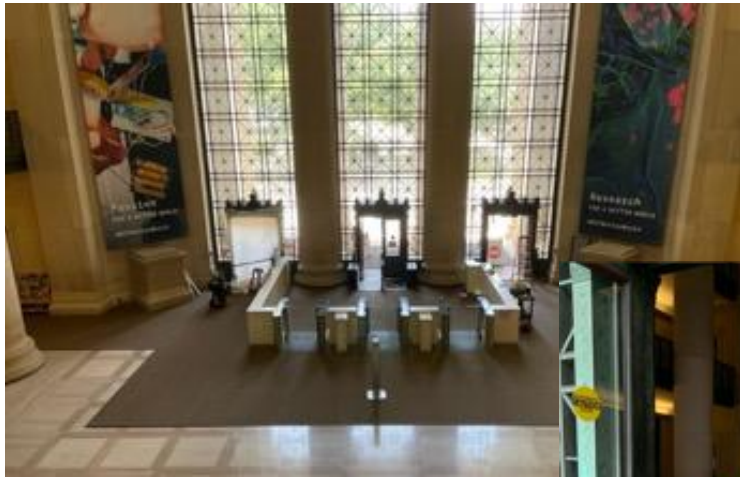
- E23 Atrium (M-F, 7:45a-5p, locked holidays and special closings)
- E23 Plaza & Carleton (M-F, 7:45a-8p & S,S, 10a-4p on holidays and special closings)
- E38 (M-F, 9a-6p, locked holidays and special closings)
- W20 (M-S, 6a-7p, holiday & closing schedule defined by CAC)
- DAPER (see calendar year 2022-2023 hours of operation)

Buildings with modified door schedules, starting Aug 22, 2022, while still not open to general public on holidays and special closings:

- 32 Stata (M-F, 6a-6p)
- 76 KI (M-F, 6a-6p)
- E25 Atrium (M-F, 6a-6p)

*Additionally, exterior doors opened for Institute events per request to MIT IS&T Physical Security.

MIT building access: Lobby 7 changes



ID and QR Readers
installed at exterior doors

Daytime Mon – Fri, 9am-5pm ET:

- Center doors unlocked (and may appear physically "open," weather permitting)
- Tap in at turnstiles with MIT ID or Tim Ticket
- Far right/left doors: tap in at door

Evenings and weekends:

- All three sets of doors closed/locked
- Tap in at door with MIT ID or Tim Ticket
- Tap in at turnstiles if using center doors (double tap)
- Technical capability to modify access

Campus access policy – find all the details

<https://now.mit.edu/policies/campus-access-and-visitors/>

Info will be updated to be current including changes effective Aug 22, 2022.

Thanks to

- Office of the Provost (campus access and space planning oversight)
- MIT Police (safety/security considerations)
- IS&T (technical / systems considerations and implementation)
- Campus Services & Stewardship (oversight for campus planning/design and management of physical plant)
- Campus Planning (design/planning considerations)
- Facilities (physical operations and implementation; impacts on staff working 24/7 on campus; signage at doors)

Thank you.

